

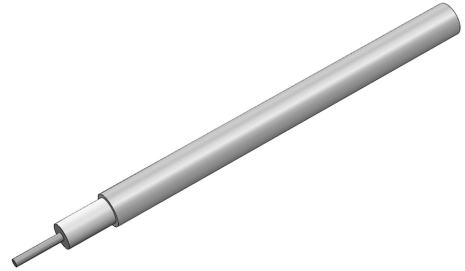
.0865 Coaxial Cable – 50 Ω Semi-Rigid Stainless Steel with S.S. Center Conductor



© 2024 EZ FORM CABLE INC. ALL RIGHTS RESERVED.

EZ-86-SS-SS

ø.0865" Semi-Rigid Stainless Steel Outer Conductor, SS Center Conductor, PTFE Dielectric, 50 Ω.



Specifications

DIMENSIONS

Center Conductor Diameter	0.0201 in
Dielectric Diameter	0.0660 in
Outer Conductor Diameter	0.0865 in

MATERIALS

Center Conductor Material	SS
Dielectric Material	PTFE
Outer Conductor Material	Stainless Steel
RoHS Compliant	Yes

MECHANICAL CHARACTERISTICS

Minimum Temperature	-55 °C
Maximum Temperature	+200 °C
Inside Bend Radius (Minimum)	0.250 in
Weight	1.30 lbs per 100 ft

ELECTRICAL CHARACTERISTICS

Nominal Impedance	50.0 Ω
Nominal Impedance Margin	±1.5 Ω
Velocity of Propagation	69.50%
Shielding Effectiveness	>165 db
Voltage Withstanding	5000 VRMS @ 60 Hz
Continuous Working Voltage	1900 VRMS max
Maximum Operating Frequency	61 GHz

Attenuation

FREQUENCY	DB / 100 FT TYPICAL
0.5 GHz	89 db
1.0 GHz	125 db
5.0 GHz	285 db
10.0 GHz	400 db
18.0 GHz	550 db
26.5 GHz	650 db
40.0 GHz	825 db
50.0 GHz	926 db

Power

FREQUENCY	WATTS CW @ 20 °C (MAX)
0.5 GHz	50 W
1.0 GHz	35 W
5.0 GHz	15 W
10.0 GHz	11 W
18.0 GHz	8 W
26.5 GHz	6 W
40.0 GHz	5.4 W
50.0 GHz	4.8 W