

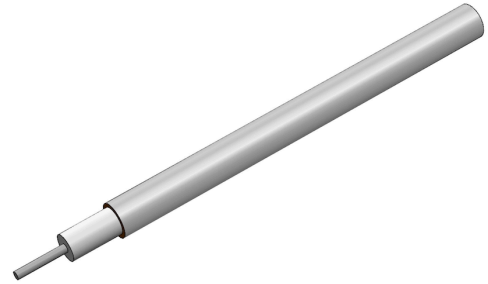
# .0865 Coaxial Cable – 50 Ω Semi-Rigid Tin-Plated Copper – Non-Magnetic



© 2024 EZ FORM CABLE INC. ALL RIGHTS RESERVED.

## EZ-86-CU-TP/M17

∅.0865" Semi-Rigid Tin-Plated Copper Outer Conductor, SPC Center Conductor, PTFE Dielectric, 50 Ω. Non-Magnetic.



## Specifications

### DIMENSIONS

Center Conductor Diameter	0.0201 in
Dielectric Diameter	0.0660 in
Outer Conductor Diameter	0.0865 in

### MATERIALS

Center Conductor Material	SPC
Dielectric Material	PTFE
Outer Conductor Material	Copper
Outer Conductor Plating Material	Tin
RoHS Compliant	Yes

### MECHANICAL CHARACTERISTICS

Minimum Temperature	-55 °C
Maximum Temperature	+125 °C
Inside Bend Radius (Minimum)	0.125 in
Weight	1.40 lbs per 100 ft

### ELECTRICAL CHARACTERISTICS

Nominal Impedance	50.0 Ω
Nominal Impedance Margin	±1.5 Ω
Velocity of Propagation	69.50%
Shielding Effectiveness	>165 db
Voltage Withstanding	5000 VRMS @ 60 Hz
Continuous Working Voltage	1500 VRMS max
Maximum Operating Frequency	60 GHz

### Attenuation

FREQUENCY	DB / 100 FT TYPICAL
0.5 GHz	13.5 db
1.0 GHz	19.5 db
5.0 GHz	46 db
10.0 GHz	68 db
18.0 GHz	94 db
26.5 GHz	120 db
40.0 GHz	160 db
50.0 GHz	186 db

### Power

FREQUENCY	WATTS CW @ 20 °C (MAX)
0.5 GHz	235 W
1.0 GHz	165 W
5.0 GHz	70 W
10.0 GHz	50 W
18.0 GHz	35 W
26.5 GHz	26 W
40.0 GHz	21 W
50.0 GHz	19 W