

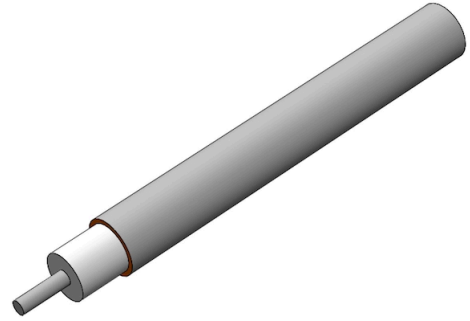
.141 Coaxial Cable – 50 Ω Semi-Rigid Stainless Steel



© 2024 EZ FORM CABLE INC. ALL RIGHTS RESERVED.

EZ-141-CU-SS

∅.141" Semi-Rigid Stainless Steel Outer Conductor, SPC
Center Conductor, PTFE Dielectric, 50 Ω.



Specifications

DIMENSIONS

Center Conductor Diameter	0.0362 in
Dielectric Diameter	0.1175 in
Outer Conductor Diameter	0.1410 in

MATERIALS

Center Conductor Material	SPC
Dielectric Material	PTFE
Outer Conductor Material	Stainless Steel
RoHS Compliant	Yes

MECHANICAL CHARACTERISTICS

Minimum Temperature	-55 °C
Maximum Temperature	+200 °C
Inside Bend Radius (Minimum)	0.380 in
Weight	3.25 lbs per 100 ft

ELECTRICAL CHARACTERISTICS

Nominal Impedance	50.0 Ω
Nominal Impedance Margin	±1.0 Ω
Velocity of Propagation	69.50%
Shielding Effectiveness	>165 db
Voltage Withstanding	5000 VRMS @ 60 Hz
Continuous Working Voltage	1900 VRMS max
Maximum Operating Frequency	34 GHz

Attenuation

FREQUENCY	DB / 100 FT TYPICAL
0.5 GHz	17.7 db
1.0 GHz	25.3 db
5.0 GHz	58.9 db
10.0 GHz	85.8 db
18.0 GHz	118.9 db
26.5 GHz	148.2 db

Power

FREQUENCY	WATTS CW @ 20 °C (MAX)
0.5 GHz	347 W
1.0 GHz	243 W
5.0 GHz	105 W
10.0 GHz	73 W
18.0 GHz	53 W
26.5 GHz	43 W